



# BEVERAGE-AIR

3779 Champion Blvd., Winston-Salem, NC 27105  
1-888-845-9800 Fax# 1-336-245-6453  
<http://www.Beverage-Air.com>

**CUSTOMER'S CHOICE FOR A *HOT* KITCHEN**  
**Tested & Certified to Ambient Class of 100°F**

**3 Year Parts/Labor Warranty**  
**Additional 2 Year Compressor Warranty**

### WORKTOP COOK STAND REFRIGERATORS & FREEZERS

Beverage-Air's cook stand refrigerators are designed to accommodate countertop cooking equipment and feature a full marine drip-guard to prevent spills from dripping over the edge. WTRCS84 & WTFCS84 Series models are available in 4 top configurations (84" Width, 89" Width, 96" Width, 108" Width) to provide the flexibility in your workspace. Drawers provide ample food product storage. Working height of 26 3/4" on heavy-duty six-inch (6") casters.

### CABINET CONSTRUCTION

Heavy-duty construction with 14 gauge stainless steel on top. Interior of cabinet is constructed of corrosion-resistant stainless steel. Drawers are equipped with heavy-duty workflow handle. Cabinet integrity is reinforced by use of structural columns. Cabinets are insulated with foamed-in-place polyurethane insulation of 2" thickness for added strength and maximum energy efficiency. Cabinet back and bottom are constructed of galvanized steel.

Exterior solar digital thermometer with battery backup is standard.

### DRAWER CONSTRUCTION

Drawer frames are constructed of heavy duty, 12 gauge stainless steel and are supported on stainless steel telescoping drawer slides with three stainless steel roller bearing wheels for maximum support of stored food product. Upper & lower drawers accommodate two 6" deep 12" x 20" pans of combinations of 1/6 size pans or larger. Heavy duty pan divider supports are supplied. Foodservice pans are not included. A snap in type vinyl magnetic gasket is attached to each drawer for positive seal.

### REFRIGERATION

#### Refrigerated Chef Base

Self-contained refrigeration system utilizes R134a refrigerant metered by a capillary tube system. Automatic (hot gas) condensate evaporation is provided. Interior forced air system, with high humidity evaporator coils, provide the ideal environment for food preservation.

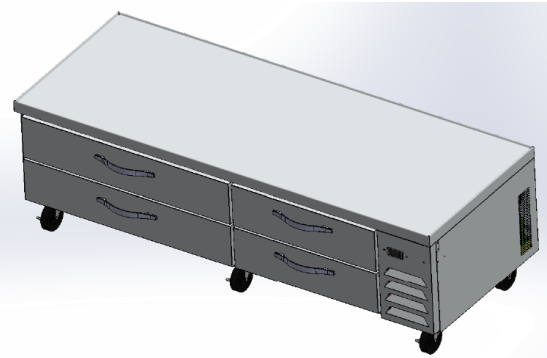
#### Freezer Chef Base

Self-contained refrigeration system utilizes R404a refrigerant metered by a capillary tube system. Automatic (hot gas) condensate evaporation is provided. Interior forced air system, with high humidity evaporator coils, provide the ideal environment for food preservation.

Item No. \_\_\_\_\_  
Quantity \_\_\_\_\_

## WORKTOP COOK STAND REFRIGERATORS & FREEZERS 4 DRAWER EQUIPMENT BASE

**MODELS:**  
WTRCS84-1  
WTRCS84-1-89  
WTRCS84-1-96  
WTRCS84-1-108  
WTFCS84-1  
WTFCS84-1-89  
WTFCS84-1-96  
WTFCS84-1-108



**WTRCS84-1/  
WTFCS84-1**

### ELECTRICAL CONNECTION

Units pre-wired at factory and include 8' long cord and plug



\*Note: Not all markings may apply to all model variations.

Available From:

<b>Model Specified</b> _____	<b>Store#</b> _____
<b>Location</b> _____	<b>Quantity</b> _____



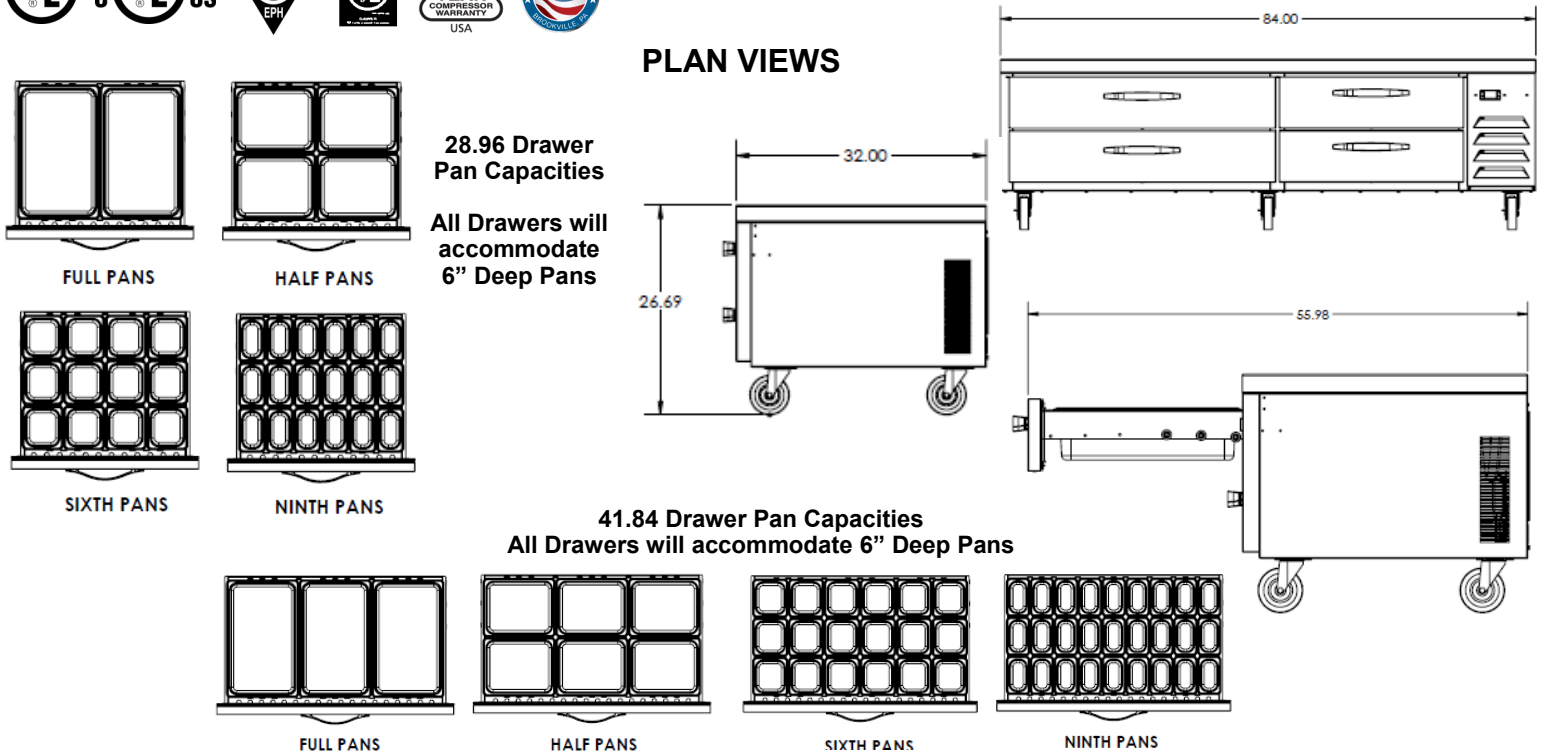
## Worktop Refrigerator & Freezer Cook Stand Model Series

Models: WTRCS84-1, WTRCS84-1-89, WTRCS84-1-96, WTRCS84-1-108, WTFCS84-1, WTFCS84-1-89, WTFCS84-1-96, WTFCS84-1-108

MODEL	WTRCS84-1	WTFCS84-1	WTRCS84-1-89	WTFCS84-1-89	WTRCS84-1-96	WTFCS84-1-96	WTRCS84-1-108	WTFCS84-1-108
<b>EXTERNAL DIMENSIONAL</b>								
Length Overall (inches)	84"	84"	89"	89"	96"	96"	108"	108"
Length Overall (mm)	2134	2134	2261	2261	2438	2438	2743	2743
Depth Overall (inches)	32"	32"	32"	32"	32"	32"	32"	32"
Depth Overall (mm)	813	813	813	813	813	813	813	813
Height Overall— (inches)	26 3/4"	26 3/4"	26 3/4"	26 3/4"	26 3/4"	26 3/4"	26 3/4"	26 3/4"
Height Overall— (mm)	680	680	680	680	680	680	680	680
Number of drawers	4	4	4	4	4	4	4	4
Depth with Drawer Open 90 °	57 1/4"	55.98	57 1/4"	55.98	57 1/4"	55.98	57 1/4"	55.98
Top Load Rating (lbs)	1000	1000	1000	1000	1000	1000	1000	1000
Top Load Rating (kg)	454	454	454	454	454	454	454	454
<b>INTERNAL DIMENSIONAL DATA</b>								
NET Capacity (cubic ft.)	17.5	17.5	17.5	17.5	17.5	17.5	17.5	17.5
NET Capacity (Liters)	496	496	496	496	496	496	496	496
<b>ELECTRICAL DATA</b>								
Full Load Amperes 115/60/1	4.5	10.6	4.5	10.6	4.5	10.6	4.5	10.6
<b>REFRIGERATION DATA</b>								
Horsepower	1/3	3/4	1/3	3/4	1/3	3/4	1/3	3/4
<b>WEIGHT DATA</b>								
Gross Weight (Crated lbs)	592	552	588	560	610	647	597	669
Gross Weight (Crated kg)	269	250	267	254	677	293	271	303



Note: Not all markings may apply to all model variations. \*N/A: Not available at time of printing.



## BEVERAGE-AIR® CORPORATION

3779 Champion Blvd. • Winston-Salem, NC 27105 USA • (336) 245-6400 • Fax (336) 245-6453 • (888) 845-9800 • www.beverage-air.com

Specifications are subject to change without prior notice. 12/16